



Picture: Version with display

Features

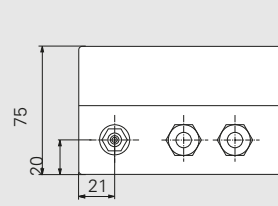
- » Precise absolute pressure transmitter
- » AD: for absolute pressure
- » BA: for atmospheric pressure
- » High level of accuracy and long-term stability
- » Little zero-point drift or hysteresis; largely independent of temperature
- » The size of the optional display can be adjusted (reduced) in the factory to correspond to the height of the installation site, see DIN ISO 2533 (only BA 1000)

Measurement accuracy ¹⁾	± 1% FS
Temperature coefficient span	max. 0.04 % / K
Temperature coefficient zero point	max. ±0.04 % / K
Calibration temperature	22 °C ± 4 K
Operating temperature	10 .. 60 °C
Storage temperature	- 10 .. 70 °C
Medium	air, all non-aggressive and non-flammable gases
Signal stability	0.3 hPa/year
Reduction	0 .. 850 m above sea level (only BA 1000) (please indicate when placing your order)
Power consumption	approx. 3 VA
Cable glands	2 x PG 7 (housing without display) clamping range Ø 3 ... 6.5 mm 2 x PG11 (housing with display) clamping range Ø 5 ... 10 mm
IP rating	BA 1000: IP53; AD 1000: IP54
Weight	approx. 600 g
Pressure ports ²⁾	for tubing NW 6 mm
Certificates	CE

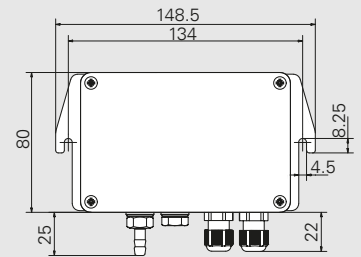
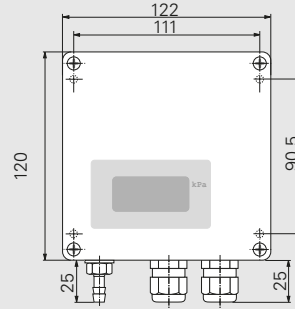
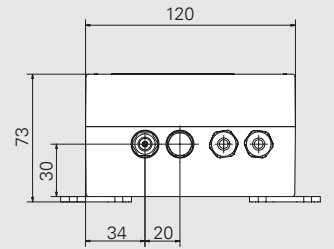
¹⁾ Reference ± 0.5 hPa with respect to sea level

²⁾ AD 1000: 1 pressure port, BA 1000: no pressure port

AD / BA 1000 with display



AD / BA 1000 without display



AD 1000: 1 pressure port
BA 1000: no pressure port

All dimensions in mm

Order code	A	B	C	D	E	F
AD-BA 1000						

Product	Measurement range	A
AD 1000	0.. 50 kPa	50A
	0.. 100 kPa	100A
	80.. 120 kPa	80A
	90.. 110 kPa	90A
	100.. 0 kPa	0A
BA 1000	80.. 120 kPa	80B
	85.. 115 kPa	85B
	90.. 110 kPa	90B
	95.. 115 kPa	95B

Output signal	B
0.. 10 V ($R_L \geq 2 \text{ k}\Omega$)	1
0.. 20 mA ($R_L \leq 500 \Omega$)	0
4.. 20 mA ($R_L \leq 500 \Omega$)	4

LCD	D
none	0
3 ½ digit	3

Reduction ³⁾	E
none	0
please indicate in meters (e.g. 2 m) ³⁾	

Power supply	C
24 VDC, + 20 % / - 15 %	24D
24 VAC, ± 10 % (50/60 Hz)	24A
115 VAC, ± 10 % (50/60 Hz)	115
230 VAC, ± 10 % (50/60 Hz)	230

³⁾ only for BA 1000

Calibration certificate	F
none	0
Factory calibration	W
Calibration according to DKD-R 6-1	D